



## Type 7 Proprietary Kitchen Exhaust Hood





## Features & Benefits

- Envirohood will be fully constructed from 1.2mm 304 Grade Stainless Steel and polished to a No 4 finish. Non exposed interior sections (including Tops) of the Envirohood shall also be manufactured from Stainless Steel and Australian engineered and manufactured.
- For longer continuous length hoods, the Envirohood shall be be manufactured in sections.
- The Envirohood shall have Brushed Stainless Steel, IP44 rated, Flush Mounted LED Lights with polycarbonate lens capable of being interchangeable from Cool White, Warm White or Daylight.
- Exhaust air spigots and Make Up air spigots are to be located on the top of the hood and are supplied with every manufactured Envirohood.
- Make Up air spigots are to be 250 mm diameter and connected via flexible ducts to supply a minimum of 80% of the exhausted air (as Make Up air) to the conditioned space as per the requirements of AS 1668.2.
- The Stainless Steel perforated front face Make Up air panel shall be removable without the need of tools (no screws).
- The Ansul fire suppression system can be integrated into the Envirohood. Pre-engineered fire suppression systems are intended to protect areas around exhaust hoods, duct plenums, and filters as well as safeguard kitchen appliances.
- UV ozone technology is available in all Envirohood models and which can be integrated into the exhaust hood to remove grease and odours in the kitchen exhaust system.
- Air Balancing will be achieved by built-in double skin slide dampers, accessible from within the hood, for the exhaust air and pivot volume control dampers in the spigots for the supply air.
- There will be a gutter of a minimum size of 70mm wide by 25mm high on all four sides of the hood for oil and grease collection. These shall be fitted with removable 40 diameter drain plugs, welded and polished, on the rear gutter for oil collection.
- The built in Air Curtain is to be independently pressurised with an integral, 10 speed, centrifugal jet fan/s (factory set). The Air Curtain delivers the air via small, engineered orifices around the inside perimeter of the hood to ensure the capture and containment efficiencies are met.
- Filtration is achieved through either certified CSIRO 1530.1 stainless steel honeycomb or baffle Filters or UL approved stainless steel baffle filters.
- All Envirohood models are independently certified by Global Mark Pty Ltd.



## Envirohood Models



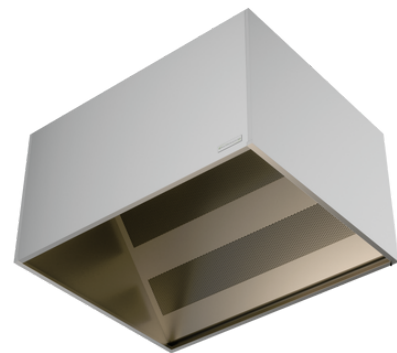
**Envirohood - WM ( Wall Mount )**



**Envirohood - I ( Island - V Bank )**



**Envirohood - LB ( Low - Back )**



**Envirohood - DW ( Dishwasher )**



**global-mark**

Envirohood Type 7 proprietary independently certified by Global Mark Pty Ltd



## ISOMETRIC VIEW

